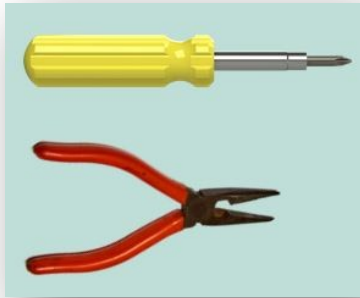




SCRIPT

SECTOR: ELECTRONICS AND ELECTRICAL ENGINEERING IN GREECE

TOPIC: COMPUTER MAINTENANCE TOOLS AND EQUIPMENT
- GET TO KNOW THE ESSENTIAL TOOLS
AND TERMS YOU WILL NEED TO USE

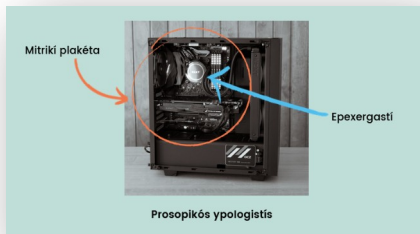


Welcome to a computer and network maintenance service. To start in our computer and network maintenance department, we will need to prepare the:

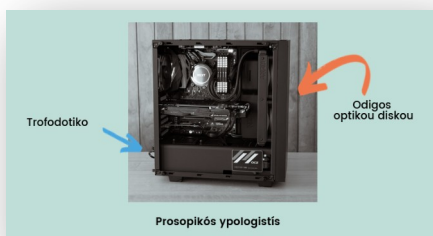
Phillips screwdriver – [Katsavidi Philips](#)
nose pliers - [Mytotsimpido](#)
anti-static wrist strap – [Antistatikos imantas karpou](#)
LAN tester – [Elenktis diktyou](#)



From the wiring diagram, read the instructions to determine the choice of equipment needed, the number of usable ports and the desired speed. —

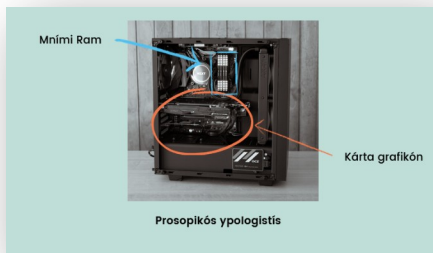


Then we will discover the elements to be implanted in the tower of the PC - [Prosopikós ypologistís](#). Once the motherboard [Mitríki plakéta](#) that supports the overall operation of the computer and the processor [Epexergastí](#) which interprets and executes the instructions it receives, have been installed inside the tower, the various internal products will have to be installed.



The reading peripherals on the front panel: DVD reader [Odigos optikou diskou](#) which transmits the reading of the discs it is offered, the mass storage (SSD or HDD), which stores the recorded data
The power supply, [Trofodotiko](#) which will supply the electricity needed to operate the appliance.

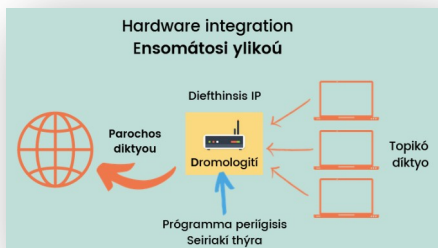
Then on the motherboard the RAM memory [Mniími Ram](#)



which stores snapshot data submitted to the processor , the graphics card, [Kárta grafikón](#) which allows the display graphics on a PC screen.



To start our computer and connect it to the internet, it is possible that we will have to install the connections! RJ45 female with its categories - [RJ45 thilykó me tis katigories tou](#). Each part will have to be installed and validated.

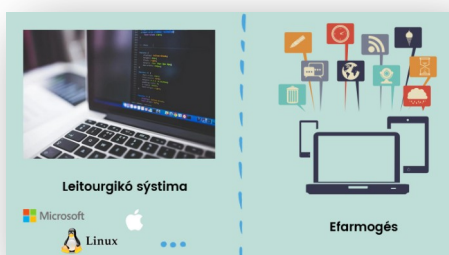


We will then have to study the hardware integration part – [Ensomátosi ylikoú](#).

To be able to connect to the Internet, we will have to set up our box [Dromologiti](#) which has been entrusted to us by our access provider [Parochos diktyou](#).

This box makes the link between our local network [Topikó diktyo](#) and the internet by what is called an IP address [Diefthinsis IP](#).

We can configure a router in different ways by the serial port, [Seiriakí thýra](#), Telnet or by a browser [Próγραμμα periígisis](#).



Then comes the software part. This is the phase of correctly setting up the BIOS or UEFI of each PC in order to recognise the different components of the computer.

We can then install our operating system [Leitourgikó sýstima](#) which plays the role of intermediary between the user and their programs on the one hand and the hardware of the computer on the other hand,

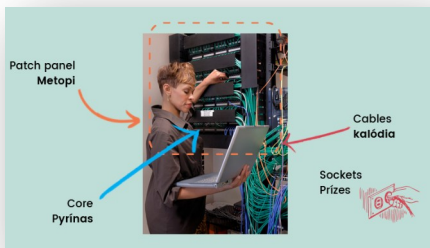
There are different operating systems: windows, linux, macos to mention only the most known.

Once our operating system and the drivers are installed, we will have to install applications [Efarmogés](#) also called software, depending on the user's needs:

Office software such as office, drawing software such as photoshop and many others.



If you are in a company, you will also have to integrate the workstations into what is called a domain **Tomeas**. This domain is managed by a domain controller. These controllers are Windows servers with a directory base called active directory which allows centralised management of the users and computers.



This work is carried out during the physical installation of the network. Once the cables **Kalódia** have been pulled from the sockets **Prizes** to the core **Pyrinas** of the patch panel **Metopi**, tests must be carried out to validate the quality of the link.



To do this, we use cable testers and, if necessary, on large installations, cable certifiers **Pistopoiités kalodíon** which will allow us to define the speed of the link.



Now for the final validations of the deployed software solutions. It will then be necessary to connect the computers with their network administration **Diachirisi diktyou**, to deploy the management of the rights of each user **Dikaiomata christon**. This work will also allow the deployment of shared software **Koinochristo logismiko**.



Finally, particular attention will be paid to the security of the network **Asfaleia diktyou**.

LIST OF VOCABULARY

SECTOR: ELECTRONICS AND ELECTRICAL ENGINEERING IN GREECE

TOPIC: COMPUTER MAINTENANCE TOOLS AND EQUIPMENT
- GET TO KNOW THE ESSENTIAL TOOLS
AND TERMS YOU WILL NEED TO USE

GREEK	YOUR LANGUAGE
<i>Katsavidi Philips</i>	
<i>Mytotsimpido</i>	
<i>Antistatikos imantas karpou</i>	
<i>Elenktis diktyou</i>	
<i>Prosopikós ypologistís</i>	
<i>Mitrikí plakéta</i>	
<i>Epexergastí</i>	
<i>Odigos optikou diskou</i>	
<i>Trofodotiko</i>	
<i>Mníimi Ram</i>	
<i>Kárta grafikón</i>	
<i>RJ45 thilykó me tis katigories tou</i>	
<i>Ensomátosi ylikou</i>	
<i>Dromologití</i>	
<i>Parochos diktyou</i>	
<i>Topikó díktyo</i>	
<i>Diefthinsis IP</i>	
<i>Seiriakí thýra</i>	
<i>Prógramma periígisis</i>	
<i>Leitourgikó sýstima</i>	
<i>Efarmogés</i>	
<i>Tomeas</i>	
<i>kalódia</i>	
<i>Prízes</i>	
<i>Pyrínas</i>	
<i>Metopi</i>	
<i>Pistopoiités kalodíon</i>	
<i>Diachirisi diktyou</i>	
<i>Dikaiomata christon</i>	
<i>Koinochristo logismiko</i>	
<i>Asfaleia diktyou</i>	