



## SCRIPT

SECTOR: ELECTRONICS AND ELECTRICAL ENGINEERING IN GERMANY

TOPIC: COMPUTER MAINTENANCE TOOLS AND EQUIPMENT  
- GET TO KNOW THE ESSENTIAL TOOLS  
AND TERMS YOU WILL NEED TO USE

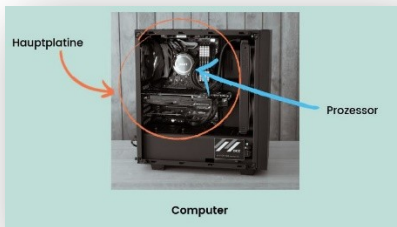


Welcome to a computer and network maintenance service. To start in our computer and network maintenance department, we will need to prepare the:

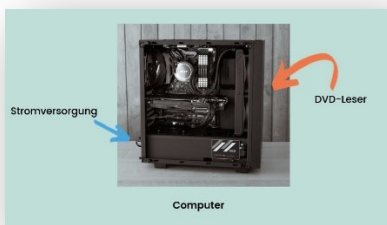
Phillips screwdriver - **Kreuzschlitzschraubendreher**  
nose pliers - **Schnabelzange**  
anti-static wrist strap – **antistatische Handschlaufe**  
LAN tester – **LAN-Tester**



From the wiring diagram, read the instructions to determine the choice of equipment needed, the number of usable ports and the desired speed. —

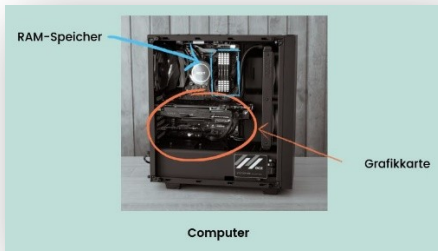


Then we will discover the elements to be implanted in the tower of the PC - **Computer**.  
Once the motherboard **Hauptplatine** that supports the overall operation of the computer and the processor **Prozessor** which interprets and executes the instructions it receives, have been installed inside the tower, the various internal products will have to be installed.



The reading peripherals on the front panel: DVD reader **DVD-Leser** which transmits the reading of the discs it is offered, the mass storage (SSD or HDD), which stores the recorded data  
The power supply, **Stromversorgung** which will supply the electricity needed to operate the appliance.

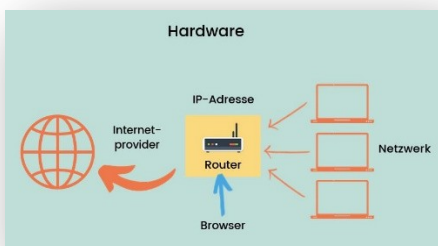
Then on the motherboard the RAM memory **RAM-Speicher** which stores snapshot data submitted to the processor , the



graphics card, [Grafikkarte](#) which allows the display graphics on a PC screen.



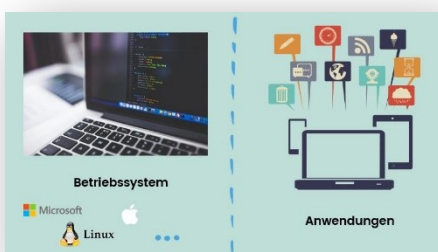
To start our computer and connect it to the internet, it is possible that we will have to install the connections! RJ45 female with its categories - [RJ45 weiblich](#). Each part will have to be installed and validated.



We will then have to study the hardware integration part - [Hardware](#).

To be able to connect to the Internet, we will have to set up our box [Router](#) which has been entrusted to us by our access provider [Internetprovider](#).

This box makes the link between our local network [Netzwerk](#) and the internet by what is called an IP address [IP-Adresse](#). We can configure a router in different ways by the serial port, Telnet or by a browser [Browser](#).



Then comes the software part. This is the phase of correctly setting up the BIOS or UEFI of each PC in order to recognise the different components of the computer.

We can then install our operating system [Betriebssystem](#) which plays the role of intermediary between the user and their programs on the one hand and the hardware of the computer on the other hand,

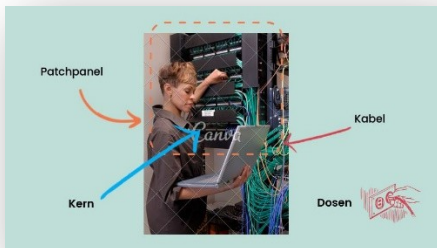
There are different operating systems: windows, linux, macos to mention only the most known.

Once our operating system and the drivers are installed, we will have to install applications [Anwendungen](#) also called software, depending on the user's needs:

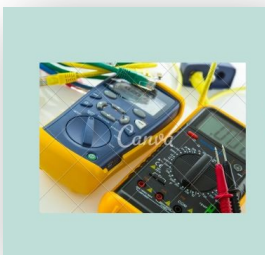
Office software such as office, drawing software such as photoshop and many others.



If you are in a company, you will also have to integrate the workstations into what is called a domain **Domain**. This domain is managed by a domain controller. These controllers are Windows servers with a directory base called active directory which allows centralised management of the users and computers.



This work is carried out during the physical installation of the network. Once the cables **Kabel** have been pulled from the sockets **Dosen** to the core **Kern** of the patch panel **Patchpanel**, tests must be carried out to validate the quality of the link.



To do this, we use cable testers and, if necessary, on large installations, cable certifiers **Kabelzertifizierung** which will allow us to define the speed of the link.



Now for the final validations of the deployed software solutions. It will then be necessary to connect the computers with their network administration **Netzwerkadministration**, to deploy the management of the rights of each user **Nutzerrechte**. This work will also allow the deployment of shared software **geteilte Software**.



Finally, particular attention will be paid to the security of the network **Netzwerksicherheit**.

## LIST OF VOCABULARY

**SECTOR:** ELECTRONICS AND ELECTRICAL ENGINEERING IN GERMANY

**TOPIC:** COMPUTER MAINTENANCE TOOLS AND EQUIPMENT  
- GET TO KNOW THE ESSENTIAL TOOLS  
AND TERMS YOU WILL NEED TO USE

<b>GERMAN</b>	<b>YOUR LANGUAGE</b>
<i>Kreuzschlitzschraubendreher</i>	
<i>Schnabelzange</i>	
<i>antistatische Handschlaufe</i>	
<i>LAN-Tester</i>	
<i>Computer</i>	
<i>Hauptplatine</i>	
<i>Prozessor</i>	
<i>DVD-Leser</i>	
<i>Stromversorgung</i>	
<i>RAM-Speicher</i>	
<i>Grafikkarte</i>	
<i>RJ45 weiblich</i>	
<i>Hardware</i>	
<i>Router</i>	
<i>Internetprovider</i>	
<i>Netzwerk</i>	
<i>IP-Adresse</i>	
<i>Browser</i>	
<i>Betriebssystem</i>	
<i>Anwendungen</i>	
<i>Domain</i>	
<i>Kabel</i>	
<i>Dosen</i>	
<i>Kern</i>	
<i>Patchpanel</i>	
<i>Kabelzertifizierung</i>	
<i>Netzwerkadministration</i>	
<i>Nutzerrechte</i>	
<i>geteilte Software</i>	
<i>Netzwerksicherheit</i>	