

SCRIPT

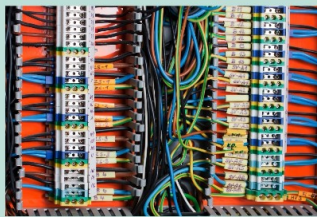
SECTOR: CONNECTION PLANS IN ELECTRONIC ENGINEERING
IN GREECE / CYPRUS

TOPIC: LEARN THE MOST IMPORTANT FACTS ABOUT THE
CABLING SYSTEM IN GREECE / CYPRUS
AND LEARN THE MOST IMPORTANT VOCABULARY.



Connection of electrical wires and cables.

Syndesi ilektrikon agogon kai kalodion



Connection of electrical wires and cables.

Syndesi ilektrikon agogon kai kalodion.

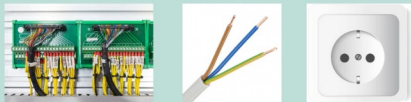
This is what you should know, when you connect or join wires in electrical installations.

Cables can be used to transmit data in the form of electrical signals

Kalodio dedomenon

Sheathed cable - Ependedymeno kalodio

Socket - Prizes



Cables can be used to transmit data in the form of electrical signals: **Kalodio dedomenon.**

Or they can be used to supply electrical energy to sockets or luminaires: **Ependedymeno kalodio.**

Single-wire rigid copper cores - Monoklonos agogos chalkou

Stranded flexible copper cores - Polyklonos agogos chalkou

Cross section - Diatomi



Let's take a closer look at two sheathed cables for electrical power supply. We remove the sheath insulation with a stripper without damaging the cores.

One of the cables has single-wire rigid copper cores. The other has finely stranded flexible copper cores.

Monoklonos agogos chalkou

Polyklonos agogos chalkou

Mobile equipment and distribution cabinet

Kinitos exoplismos kai ilektrikos pinakas



Cables with flexible copper cores are used for connecting movable devices or as individual cores in a distribution cabinet: [Kinitos exoplismos kai ilektrikos pinakas](#).

What must be observed when connecting the cores?

Agogi



What must be observed when connecting the cores: [Agogi](#)?

Earthing contact plug – Priza souko

Wire end ferrule crimping pliers
Presa akrodekton



Rule 1 - Connection to screw connections:

Rigid copper wires can be connected directly to the screw connections of the earthing contact plug.

Earthing contact plug – colloquially [Priza souko](#).

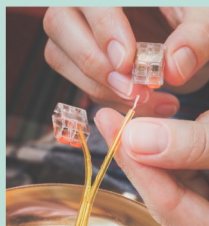
Flexible copper cores must NOT be connected directly to the screw connections of the Schuko plug.

Wire end sleeves must be pressed onto flexible copper wires with crimping pliers: [Presa akrodekton](#).

This ensures a permanent connection!

Wago plug-in terminal

Wago klemes



Rule 2 - Connection in plug-in terminals:

Rigid copper wires can be plugged directly into connecting terminals: [Wago klemes](#).

There are special connecting terminals for flexible copper wires.

Create a secure connection and stay connected!

LIST OF VOCABULARY

SECTOR: CONNECTION PLANS IN ELECTRONIC ENGINEERING
IN GREECE / CYPRUS

TOPIC: LEARN THE MOST IMPORTANT FACTS ABOUT THE
CABLING SYSTEM IN GREECE / CYPRUS
AND LEARN THE MOST IMPORTANT VOCABULARY.

GREEK	YOUR LANGUAGE
<i>Raccordement de lignes et de câbles électriques</i>	
<i>Le câble réseau</i>	
<i>Le câble électrique</i>	
<i>Fils de cuivre rigides</i>	
<i>Fils de cuivre souple</i>	
<i>La Section</i>	
<i>Boitier de jonction</i>	
<i>L'adaptateur Schuko</i>	
<i>L'embout</i>	
<i>La jonction Wago</i>	