

SCRIPT

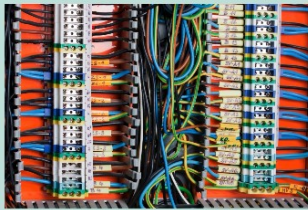
SECTOR: CONNECTION PLANS IN ELECTRONIC ENGINEERING
IN FRANCE

TOPIC: LEARN THE MOST IMPORTANT FACTS ABOUT THE
CABLING SYSTEM IN FRANCE
AND LEARN THE MOST IMPORTANT VOCABULARY.



Connection of electrical wires and cables.

Raccordement de lignes et de câbles électriques.



Connection of electrical wires and cables.

Raccordement de lignes et de câbles électriques.

This is what you should know, when you connect or join wires in electrical installations.

Cables can be used to transmit data in the form of electrical signals

Le câble réseau

Sheathed cable - Le câble électrique

Socket - La prise



Cables can be used to transmit data in the form of electrical signals: **Le câble réseau.**

Or they can be used to supply electrical energy to sockets or luminaires: **Le câble électrique.**

Single-wire rigid copper cores - Fils de cuivre rigides

Stranded flexible copper cores - Fils de cuivre souple

Cross section - La section



Let's take a closer look at two sheathed cables for electrical power supply. We remove the sheath insulation with a stripper without damaging the cores.

One of the cables has single-wire rigid copper cores. The other has finely stranded flexible copper cores.

Fils de cuivre rigides

Fils de cuivre souple

The cores of both cables have the same cross section: **La Section.**

They can therefore be loaded with the same current.

Cables with rigid copper cores are used for fixed installation, for example in the wall.

Distribution cabinet

Boitier de jonction



Cables with flexible copper cores are used for connecting movable devices or as individual cores in a distribution cabinet: [Boitier de jonction](#).

What must be observed when connecting the cores: [La section?](#)

Earthing contact plug - L'adaptateur Schuko

Wire end sleeves - L'embout



Rule 1 - Connection to screw connections:

Rigid copper wires can be connected directly to the screw connections of the earthing contact plug.

Earthing contact plug – colloquially [L'adaptateur Schuko](#).

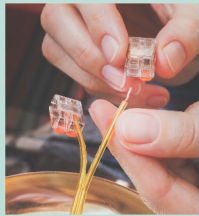
Flexible copper cores must NOT be connected directly to the screw connections of the Schuko plug.

Wire end sleeves must be pressed onto flexible copper wires with crimping pliers: [L'embout](#).

This ensures a permanent connection!

Connection terminals

La jonction Wago



Rule 2 - Connection in plug-in terminals:

Rigid copper wires can be plugged directly into connecting terminals.

There are special connecting terminals for flexible copper wires: [La jonction Wago](#).

Create a secure connection and stay connected!

LIST OF VOCABULARY

SECTOR: CONNECTION PLANS IN ELECTRONIC ENGINEERING
IN FRANCE

TOPIC: LEARN THE MOST IMPORTANT FACTS ABOUT THE
CABLING SYSTEM IN FRANCE
AND LEARN THE MOST IMPORTANT VOCABULARY.

FRENCH	YOUR LANGUAGE
<i>Raccordement de lignes et de câbles électriques</i>	
<i>Le câble réseau</i>	
<i>Le câble électrique</i>	
<i>Fils de cuivre rigides</i>	
<i>Fils de cuivre souple</i>	
<i>La Section</i>	
<i>Boitier de jonction</i>	
<i>L'adaptateur Schuko</i>	
<i>L'embout</i>	
<i>La jonction Wago</i>	